

(re)source

insulated space

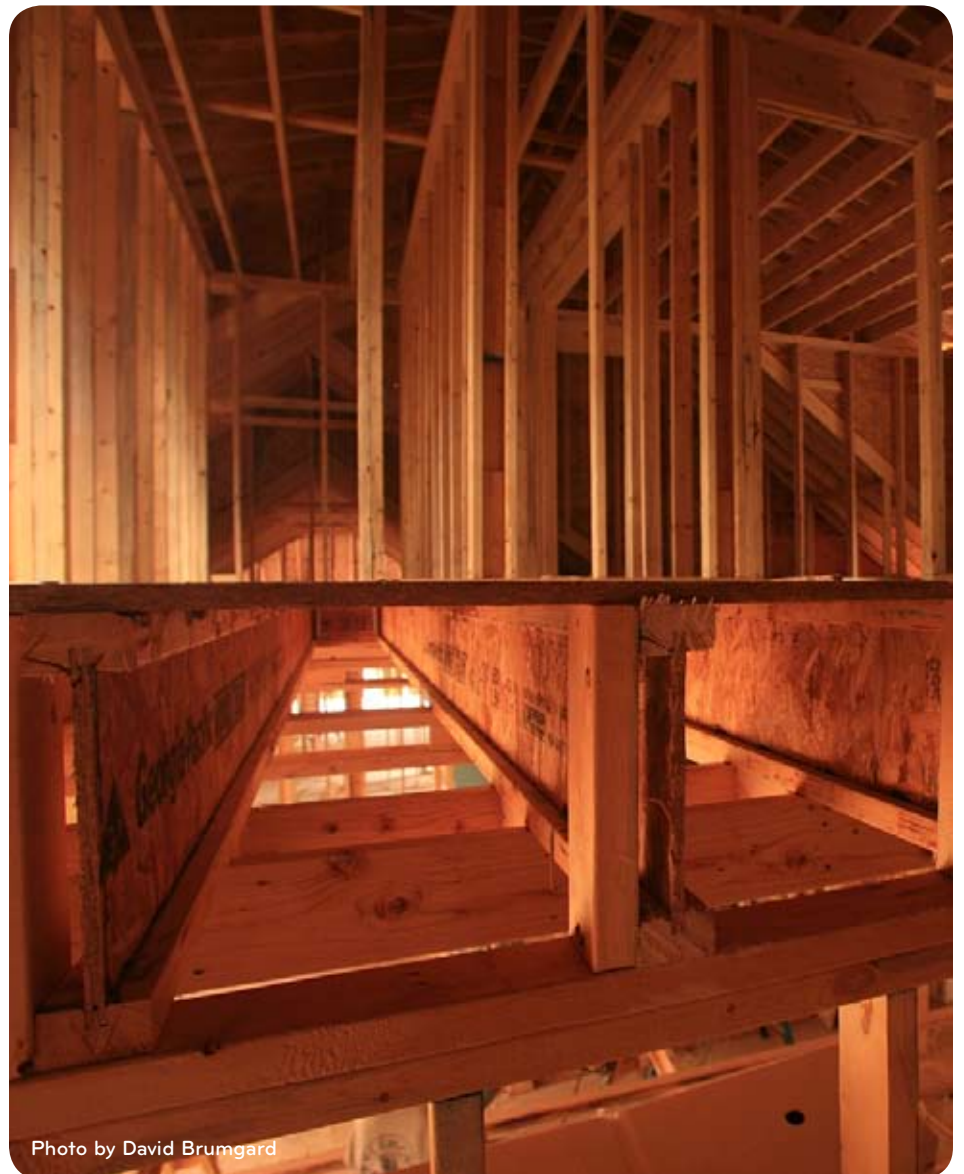


Photo by David Brumgard

insulated space

A Whole Systems Approach means controlling the temperature in every part of a home, including the crawl space and attic. Keeping temperature the same throughout the whole home helps eliminate the risk for mold, mildew, rot and termite damage. So we insulate, seal and condition. These are the three most effective strategies for reducing a home's energy consumption and ensuring its longevity.

The insulated crawl space:

In a mixed humid climate, the last thing we want to do is allow warm wet air to enter from underneath our house where that space is cool and dry. Because when hot humid air meets cool 72 degree lumber it condenses and sets on floor joists, the bottom of the floor and on the walls. This results in mold, mildew, rot and termites. A green home must have dry spaces throughout the entire home. So we insulate the interior of the crawl space, which controls the temperature. We also insulate the exterior, seal it from air penetration, and seal it from moisture with a vapor barrier on the crawl space floor. To completely eliminate the possibility of condensation, we condition the crawl space and make sure the temperature is the same on both sides of the floor.

The insulated attic:

Most homes have an estimated 6 to 10 square feet of cracks and openings where energy is lost. Many of those openings can be found in the attic where ducts and electrical wiring create opportunities for energy loss. Because heat rises, it is especially important to control the temperature in the attic. So we not only insulate the attic space and seal the air barrier, we also condition the attic space so that it remains free from condensation. Our goal is to push the temperature differential to the exterior of a home where it can't do any damage.

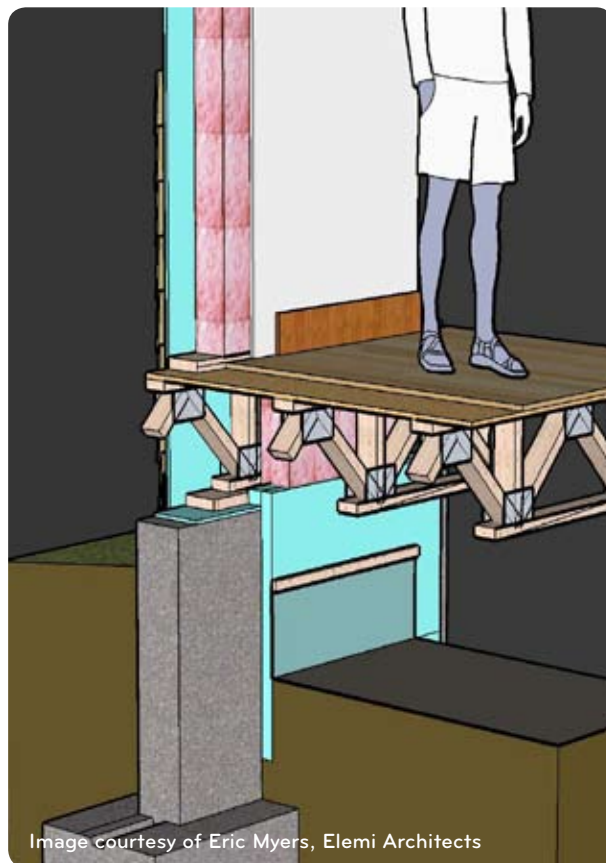


Image courtesy of Eric Myers, Elemi Architects

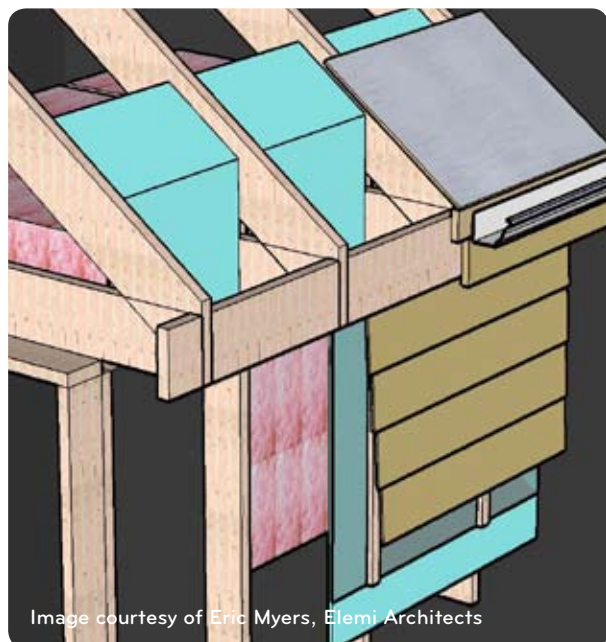


Image courtesy of Eric Myers, Elemi Architects